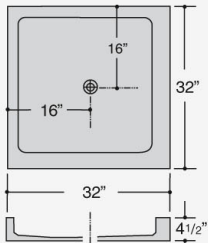


SQUARE

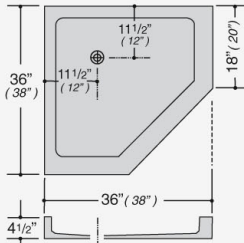
32" x 32"



▲ The above shower-bases are used for corner showers only. The exception is the 32" x 32". This base can also be used as a three-wall installation.

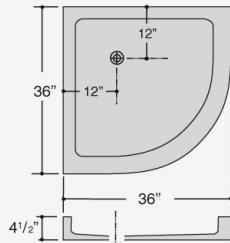
NEO ANGLE

36" x 36" and 38" x 38"



RONDO

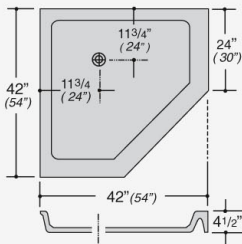
36" x 36"



The 36" x 36" square shower-base, shown below, is also available as a 36" x 36" Corner Entry. ▼

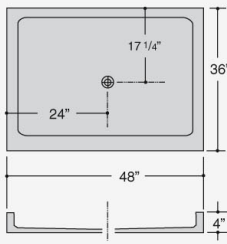
NEO ANGLE

42" x 42" and 54" x 54"



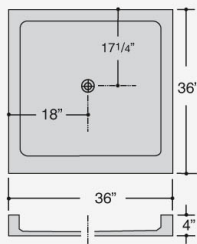
RECTANGLE

36" x 48"



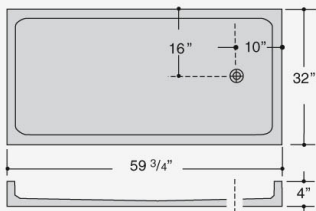
SQUARE

36" x 36"

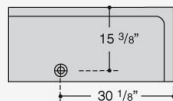


TUB REPLACER

32" x 60"



◆ 32" x 60" tub replacer can be used as left or right hand showerbase.



▲ Also available with drain centered.

The 36" x 48" showerbase can be used for **regular three wall installations**, as well as a corner unit, with the addition of a right or left splash. For a **long-lasting, trouble-free showerstall**, it is recommended to use matching **Coni-marble** wall and ceiling panels with the above mentioned bases. **Coni-Marble can also provide quality shower-doors and matching partitions.**

- **CUSTOM SHOWER-BASES ARE AVAILABLE ON REQUEST.**
- **ALL SHOWER-BASES MUST BE INSTALLED TO THE STUDS.**